



**DIZAINA
FABRIKA**



KERRAFRONT. CELLULAR CLADDING



WHY TO CHOOSE KERRAFRONT?





VOX QUALITY

- Application of KERRACORE technology in the production, which results in outstanding uniformity and density of the cellular core of the product. As a result boards feature dimensional stability and durability
- Matt surface of boards
- Environmentally friendly, 100% recyclable



SAVING TIME AND MONEY DURING INSTALLATION

- Light weight resulting in easy handling
- Wide covering width, built-in locks and factory made nail slots facilitate and speed up the installation
- Material easy to work with - not susceptible to unsightly chips and cracks during shipment and installation
- Cut ends are non water absorbent and after installation do not require any additional protection eg. painting



LOW MAINTANANCE COST

- Virtually maintenance-free - no need for painting and other treatment
- Absolutely moisture resistant - does not absorb water and is not susceptible to freeze / thaw complications. As a result doesn't peel and crack
- Does not support bacterial or fungal growth



WOOD DESIGN, CLASSIC, T-REX –
EXCELLENT WOODGRAIN PATTERN
TREND – INSPIRED BY STONE AND
MINERALS



WATERPROOF



IMPACT AND CRACK
RESISTANT



PESTS RESISTANT



EASY TO KEEP CLEAN



ENABLES FACADE VENTILATION



PERFECT COVER FOR
THERMAL INSULATION OF
ELEVATION



LIGHTWEIGHT



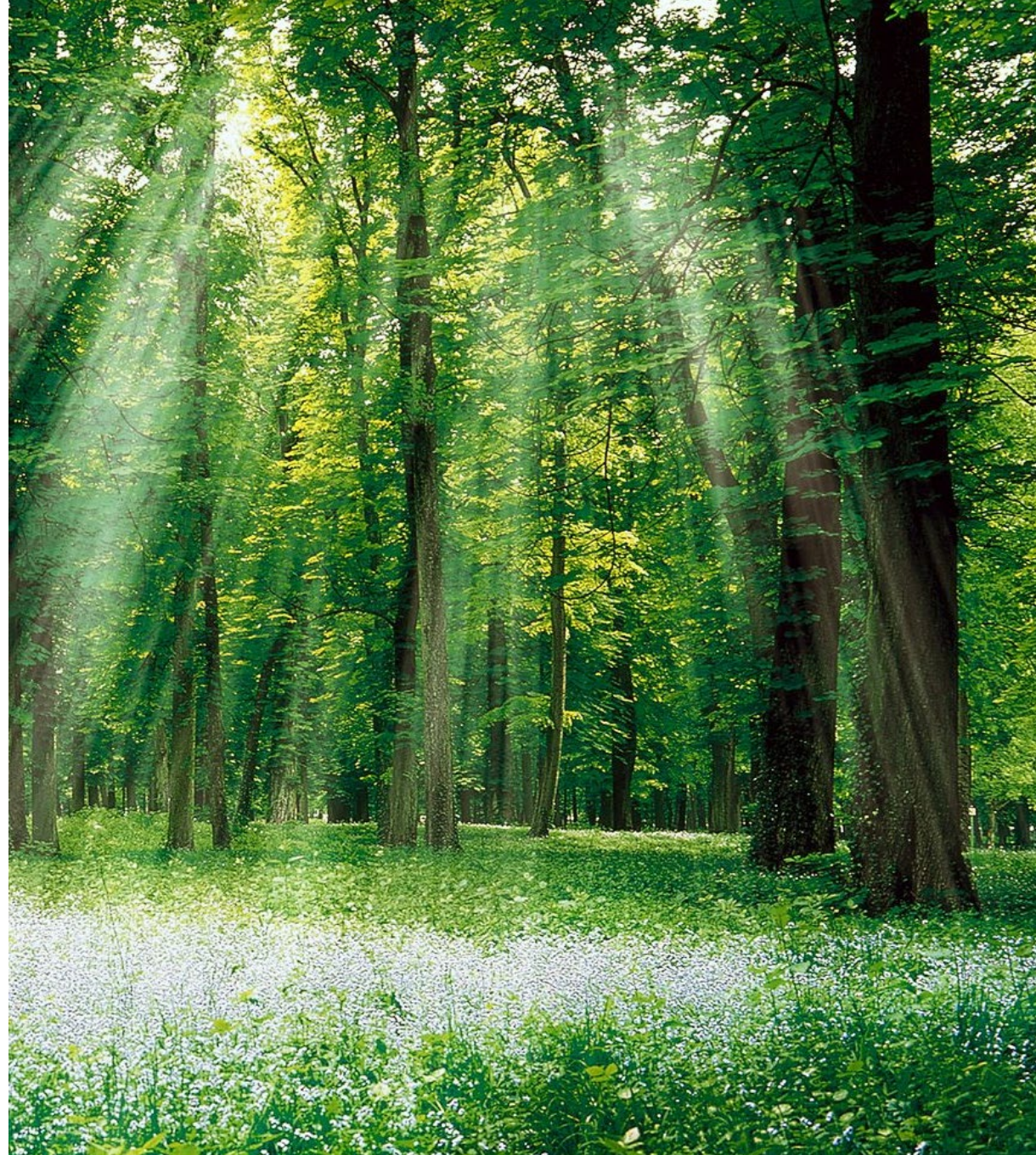
INNOVATIVE KERRACORE
TECHNOLOGY



10 YEARS WARRANTY

ECO-FRIENDLY SOLUTION

- Replacement of natural wood – limited use of forest resources
- Lighter per square meter than most cladding materials (eg. wood or fiber cement), as a result requires less fuel and energy to ship
- Does not require painting and maintenance - prevents releases of toxins and maintenance-related substances from entering the environment
- Pb-free, stabilizers Ca-Zn
- 100% recyclable



SAMPLE APPLICATIONS



WHOLE BUILDINGS



SELECTED PARTS OF FACADE



MOBILE HOMES



MODERN ARCHITECTURE



RENOVATIONS

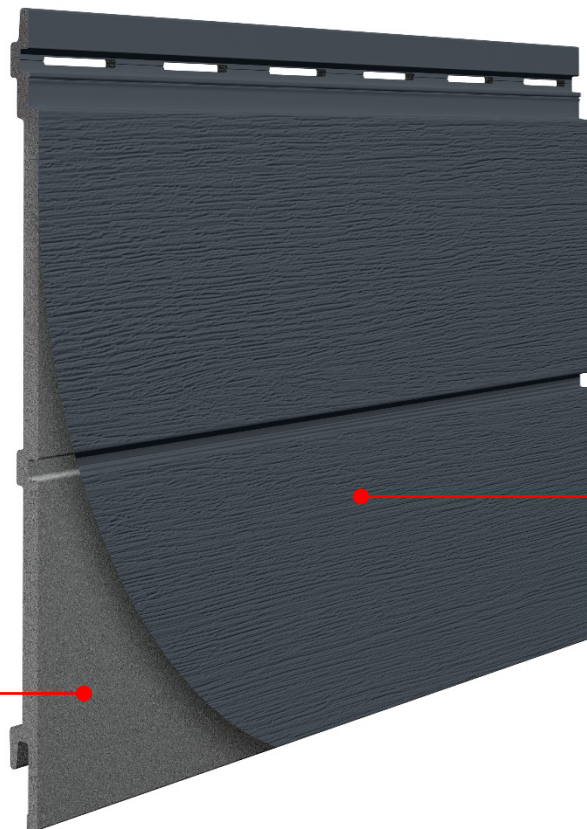


TERRACED HOUSES

KERRACORE TECHNOLOGY

CORE (FOAMED POLYMER)

It is made of a specially selected blend of minerals and polymers. It is characterized by high density and homogeneity, which affects the high strength of the product and its resistance to mechanical damage.



TOP LAYER (SOLID POLYMER)

Made of polymers hardened in the process of technical processing. It is a carrier of color and a unique structure that reflects natural wood.

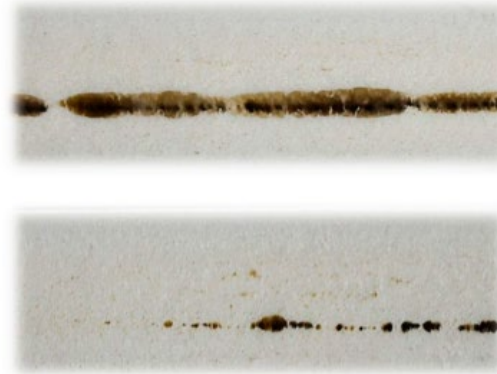
A method of finishing the surface layer of the panels is different depending on the collection and decors:

1. By adding one dye to the top layer for all solid colours.
2. By adding a few dyes to the top layer in wood-like Rustic colours.
3. By using high quality foils in Wood Effect colours.

CELLULAR CLADDING KERRAFRONT
USING KERRACORE TECHNOLOGY



OTHER CLADDINGS
MADE OF FOAMED PVC



Outstanding uniformity and density of the cellular core which results in:

- better dimensional stability
- better mechanical resistance properties
- excellent durability

COLLECTION



WOOD EFFECT



MODERN WOOD



TREND



CLASSIC



WOOD DESIGN



RETRO

WOOD EFFECT FOILED



Wood Effect Foiled is available on:

- FS-304 Fourfold board in length 6 m and 2,95 m CONNEX
Installation: horizontal / vertical
- FS-201 Single board in length 6 m and 2,95 m CONNEX
Installation: horizontal



DESIGN

- **Wood Effect Foiled** is a collection of cellular cladding in high quality foils.
- It perfectly combines advantages of cellular cladding with beauty of natural wood.
- Premium quality, textured foils give a natural wood effect and are resistant to mechanical damages, UV- radiation and changing weather conditions.
- The collection is available for single (FS-201) and fourfold (FS-304) board profiles.



COLOURS



Alpine Oak



Concrete Oak



Malt Oak



Caramel Oak



RUSTIC



Rustic is available on:

- FS-302 Double board in length 6 m and 2,95 m CONNEX
Installation: horizontal / vertical
- FS-201 Single board in length 6 m and 2,95 m CONNEX
Installation: horizontal



DESIGN

- **Rustic** is a collection of foamed cladding made in the COLORBLEND colour technology
- The colours mimic the colour of the grain of different types of wood
- The dyeing technology guarantees the uniqueness of the pattern on the panels
- The panels retain their excellent technical properties, including high resistance and durability to external conditions
- All finishes have the colours and the pattern of the panels
- The collection is available for single boards (FS-201) and double boards (FS-202).



COLOURS



Tawny



Sky



Aqua



WOOD DESIGN



Wood Design is available on:

— FS-201 Single board in length 6 m and 2,95 m CONNEX

Installation: horizontal



DESIGN

- **Wood Design** is a unique collection of cellular cladding coming in natural wood colours to reflect its warm nature
- It perfectly combines advantages of cellular cladding with timeless beauty of natural wood
- The collection is available for single board profiles (FS-201)
- Attention! Minimum order quantity is 500m² (one pallet).



COLOURS



Golden Oak



Graphite



Silver Grey



Golden Oak

MODERN WOOD



Modern Wood is available on:

- FS-302 Double board in length 6 m and 2,95 m CONNEX
Installation: horizontal / vertical
- FS-304 Fourfold board in length 6 m and 2,95 m CONNEX
Installation: horizontal / vertical



DESIGN

- What distinguishes Modern Wood is the shape, which are the modern version of a double board, which is well known and often chosen by our customers and fourfold board, a new shape in the offer.
- The shapes refer to wooden claddings but at the same time, retains the advantages of cellular cladding – resistance to water, impact and requires no maintenance.
- Both profiles allow you to create a façade with a flat surface, they can be installed vertically or horizontally and combine the shapes of double and fourfold boards.



DESIGN

- Modern Wood boards have matt finish and realistic wood embossing. Collection is offered in seven colours – from natural, warm tones, to different shades of grey.
- Modern Wood collection available for double boards (FS-302) and fourfold boards (FS-304).



COLOURS



White



Ivory



Claystone



Beige



Pearl Grey



Quartz Grey



Anthracite



23

Anthracite

TREND



Trend is available on:

- FS-301 Single board in length 6 m and 2,95 m CONNEX
Installation: horizontal/vertical



DESIGN

- Colours inspired by nature – stone and minerals
- The collection is offered in four colours, which are available in two design versions: STONE - with natural stone image and SOFT - with a subtle, monochromatic shade
- The new line follows the current trends in architecture, which are moving towards simple, large forms. Creating modern elevation with a flat surface is now possible, thanks to the new shape
- The possibility to install new boards vertically or horizontally gives freedom of design and possibility to joint it, on the facade, with another kinds of materials
- **Trend** collection is available for single boards (FS-301) in CONNEX version.

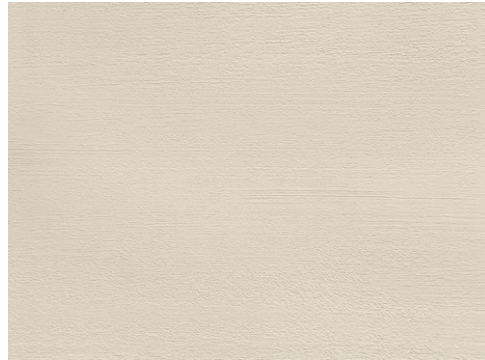


COLOURS

SOFT



Ivory



Mastic

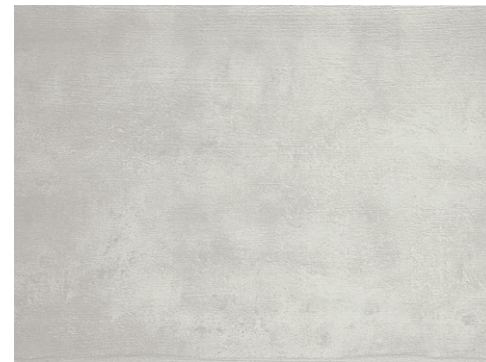
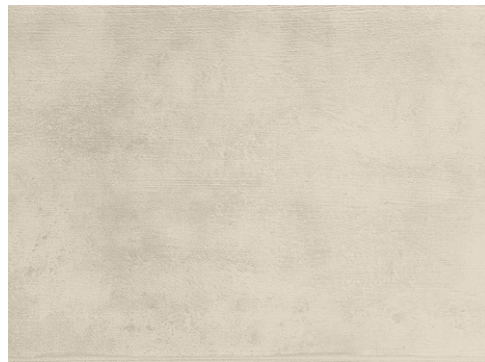
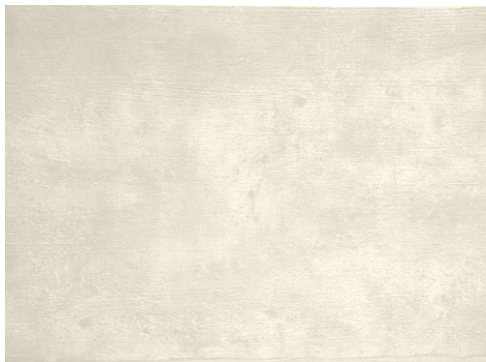


Pearl Grey



Anthracite

STONE





Anthracite Soft i Stone



Ivory Soft

CLASSIC



Classic is available on:

- FS-201 Single board, in length 6 m and 2,95 m CONNEX
Installation: horizontal
- FS-202 Double board, in length 6 m
Installation: horizontal/vertical



DESIGN

- The **Classic** collection is the basic line in nine-colour range, both light and dark
- Attractive looking wood texture and matt surface allow for creating incredibly aesthetic and long-lasting facade
- The collection is available for single boards (FS-201) and double boards (FS-202)



COLOURS



White



Creme



Beige



Claystone



Light Grey



Grey



Olive



Quartz Grey

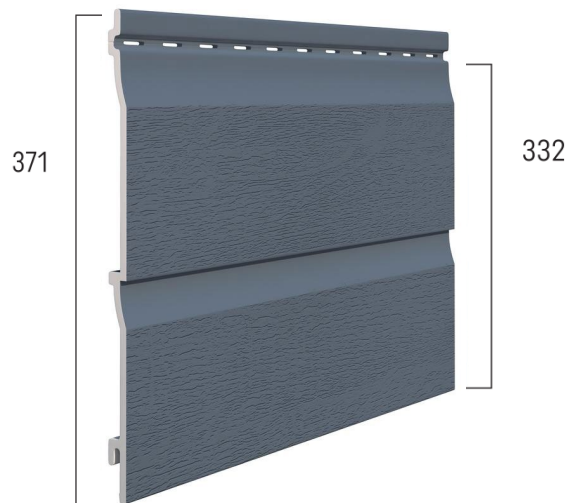


Anthracite



Claystone

RETRO



Retro is available on:

- FS-202 Double board in length 6 m
Installation: horizontal/vertical



RETRO

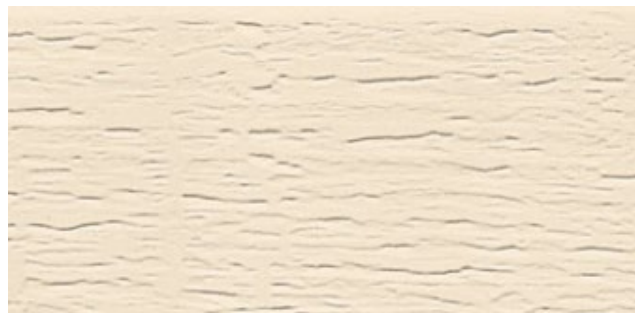
- **Retro** is a collection of facade cladding with elegant, deep texture of real wood, with visible vertical traces of saw creating natural, rustical effect.
- It's perfect for creating individual character of any house, for those who value beauty and purity and who look for a durable and maintenance free solution.
- The collection is available for double board profiles (FS-202).



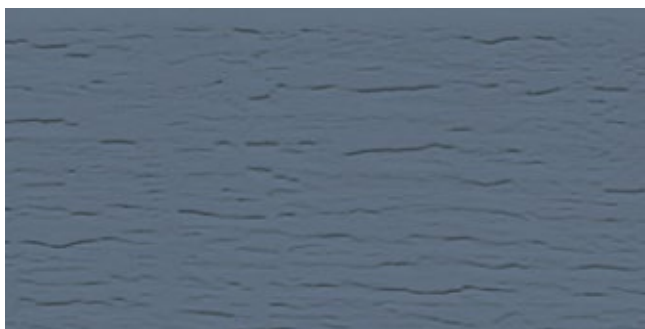
COLOURS



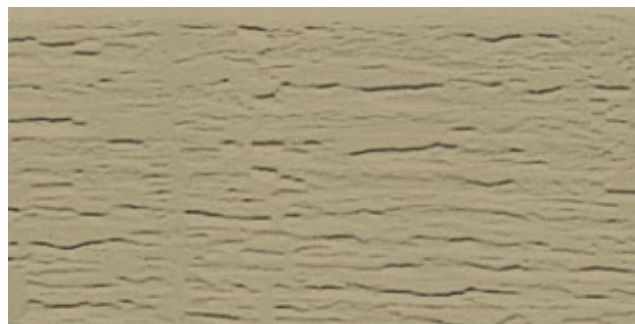
White



Creme



Blue



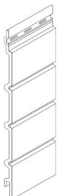


Sand



Blue

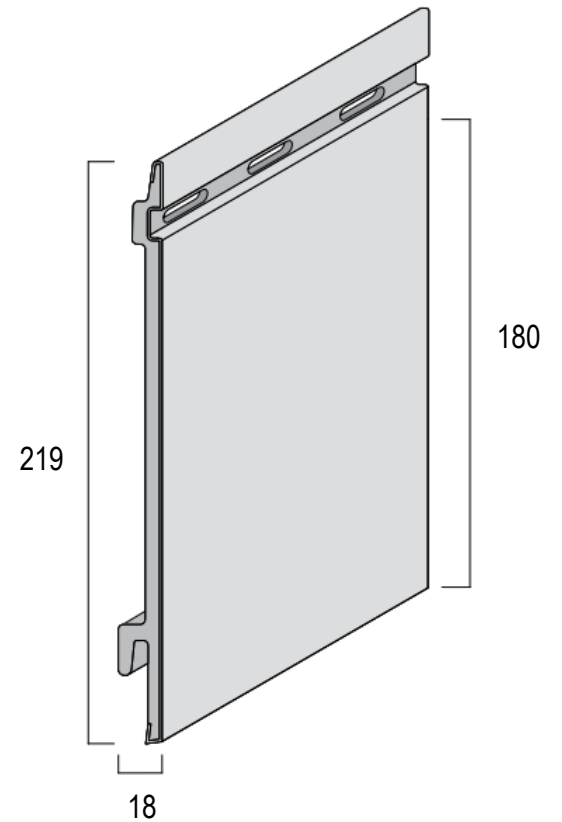
SHAPES AND LENGTHS

		WOOD EFFECT	WOOD DESIGN	MODERN WOOD	TREND	CLASSIC	RETRO	RUSTIC
	FS-201 2.95 m CONNEX	x	x			x		x
	FS-201 6 m	x	x			x		x
	FS-202 2.95 m CONNEX	x						x
	FS-202 6 m	x				x	x	x
	FS-301 2.95 m CONNEX				x			
	FS-301 6 m				x			
	FS-302 2.95 m CONNEX			x				
	FS-302 6 m			x				
	FS-304 2.95 m CONNEX	x		x				
	FS-304 6 m	x		x				



SINGLE PANEL FS-201

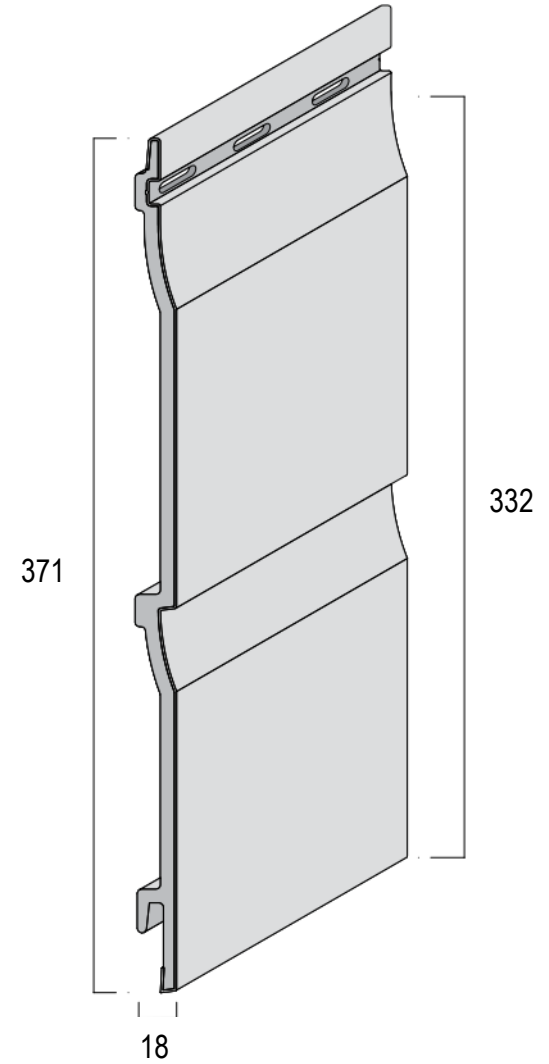
- Utility width: 180 mm
- Length: 6m and 2,95m (CONNEX)





DOUBLE PANEL FS-202

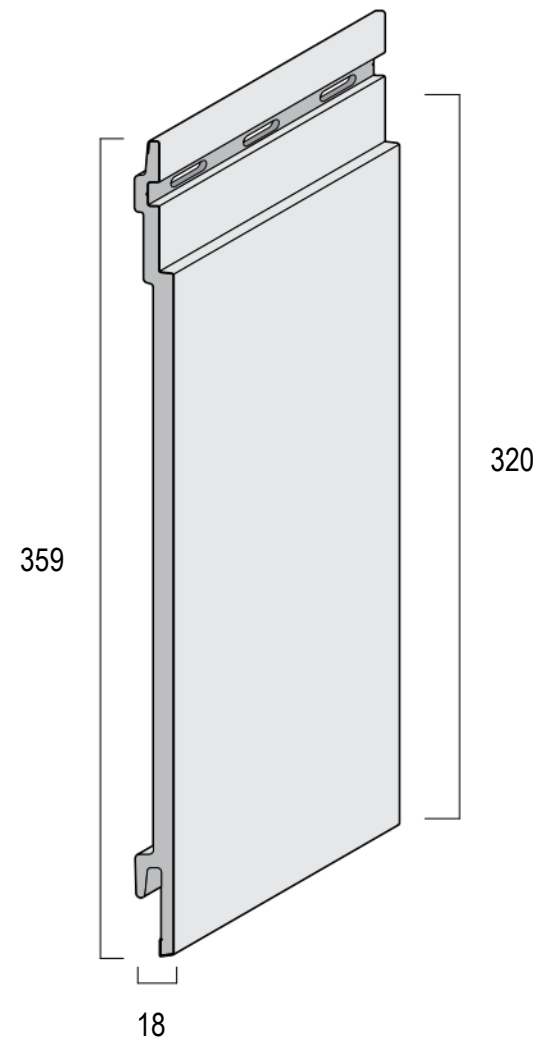
- Utility width: 332 mm
- Length: 6m





SINGLE PANEL FS-301

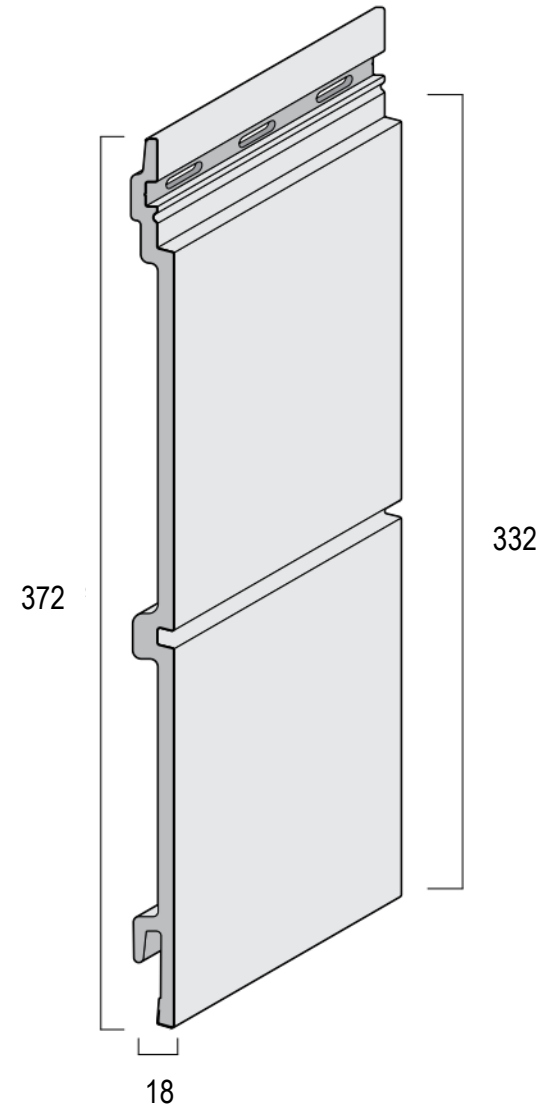
- Utility width: 320 mm
- Length: 6 m and 2,95 m CONNEX





DOUBLE PANEL FS-302

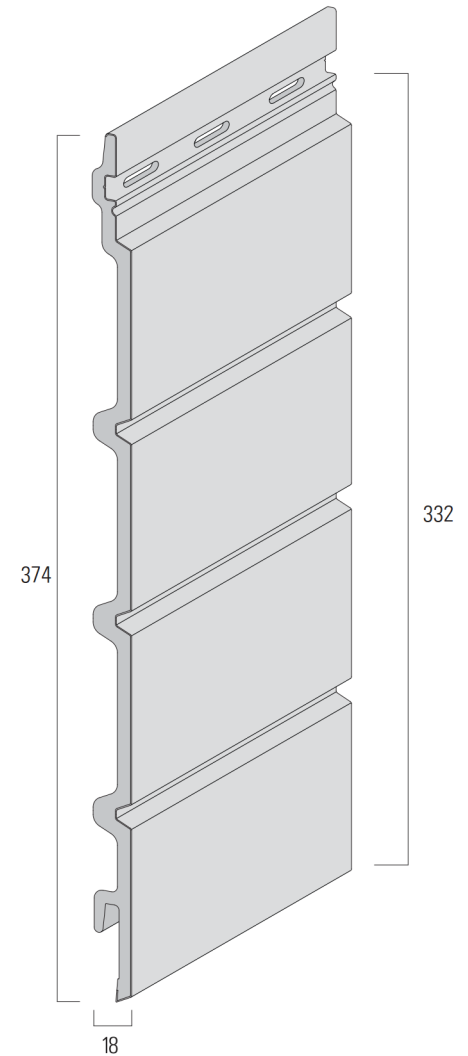
- Utility width: 332 mm
- Length: 6 m and 2,95 m CONNEX





FOURFOLD PANEL FS-304

- Utility width: 332 mm
- Length: 6 m and 2,95 m CONNEX

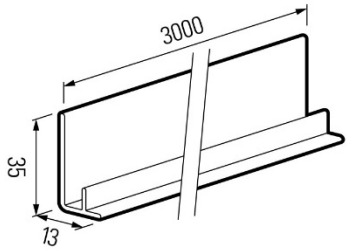


TRIMS AND ACCESSORIES

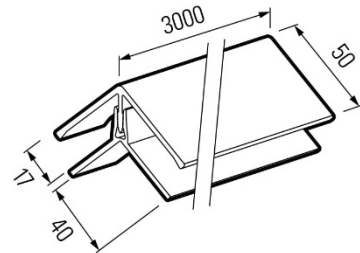
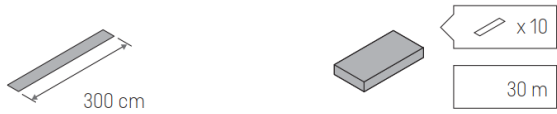
- All trims are available in colors matching the panel decors.
- Trims for the Wood Effect collection are available in the same foils as the panels. The exception is the universal corner (FS-222), where the foil covers its outer part, while the inner one is in a matching uniform color.
- In the Rustic collection, the finishing strips have a structure.
- J-connectors are available only in solid colors and do not apply to panels from the Wood Effect and Rustic collections.



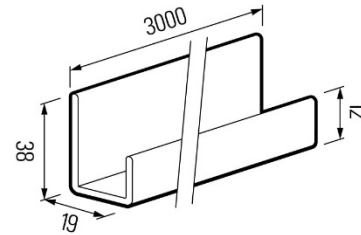
TRIMS AND ACCESSORIES



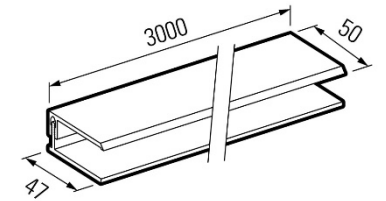
FS – 211 starting trim



FS – 222 universal corner
(2-part)



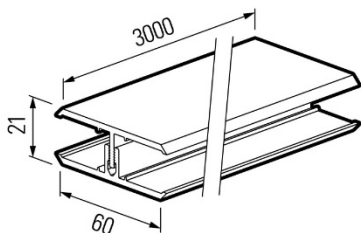
FS – 251 universal trim



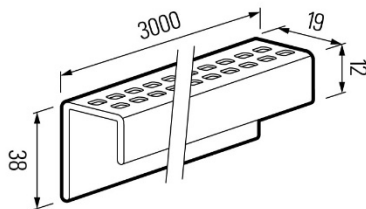
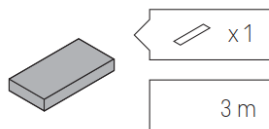
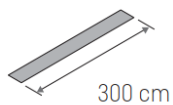
FS – 252 finishing trim
(2-part)



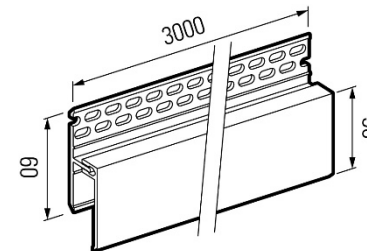
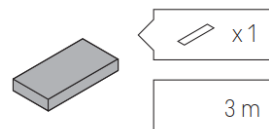
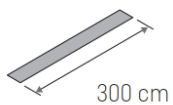
TRIMS AND ACCESSORIES



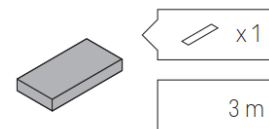
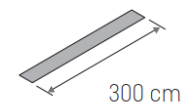
FS -282 connector
(2-part)



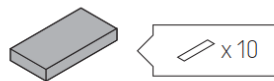
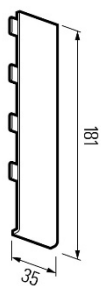
FS-261 perforated trim



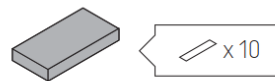
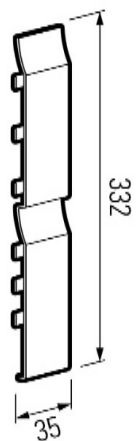
FS-262 ventilation trim
(2-part)



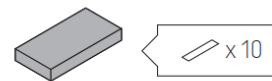
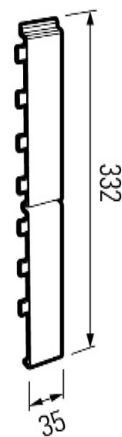
TRIMS AND ACCESSORIES



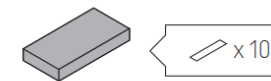
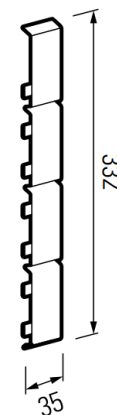
J-201 joint cover for FS-201



J-202 joint cover for FS-202



J-302 joint cover for FS-302

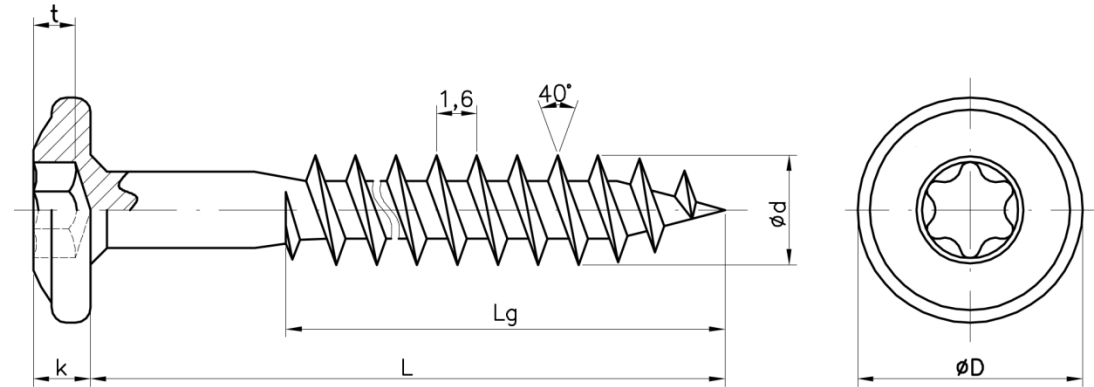
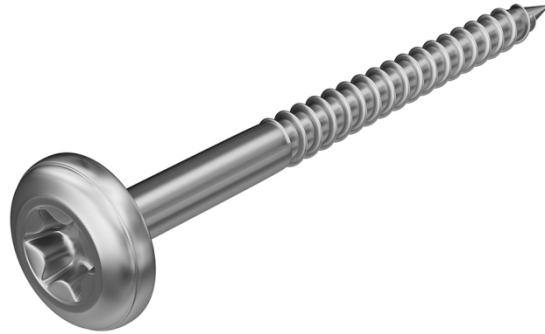


J-304 joint cover for FS-304

TRIMS AND ACCESSORIES

FITTING SCREW

INOX-UP3.5X35-TX15-A2
Fitting screw



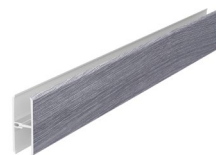
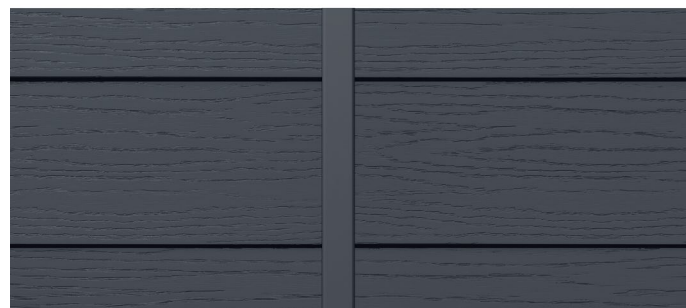
$\varnothing d$	$\varnothing D$	k	L	Lg	t
3,5 _{-0,2}	8,0 _{-0,8}	2,0 \pm 0,3	35 \pm 1,0	25 \pm 2,0	1,0 ^{+0,4}

Usage per 1 sqm (at recommended batten spacing of 40 cm)

- Material: A2 stainless steel (inox)
- Socket type: Torx T15, hexalobular, acc. to PN-EN ISO 10664
- Thread: partial, 2/3 of length
- Packaging: 500-pc box, + 1 pc T-15 Torx bit included

- with KERRAFRONT FS-201 (single board): ca 15 pcs/sqm
- with KERRAFRONT FS-301 (single board): ca 9 pcs/sqm
- with KERRAFRONT FS-202 (double board): ca 9 pcs/sqm
- with KERRAFRONT FS-302 (double board): ca 9 pcs/sqm
- with KERRAFRONT FS-304 (double board): ca 9 pcs/sqm

WAYS OF CONNECTING PANELS



— CONNEX system (2,95 m)– no additional accessories

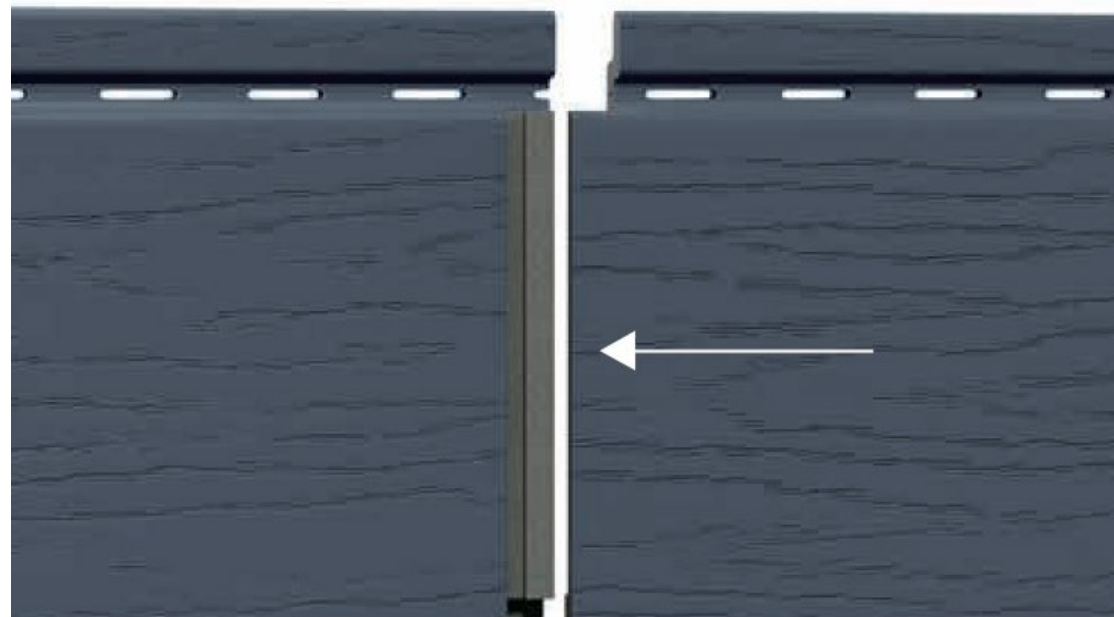
— junction with J-302 and FS-304 (6 m)

— Connector H (FS-282)

SYSTEM CONNEX

CONNEX system - is a patented, innovative, connector-free method of butt-joining single boards FS-201 and FS-301, double boards FS-202 and FS-302 and fourfold board FS-304.

- ladding boards come in 2,95 m lengths,
- they have special built-in locks at each end, facilitating much quicker and easier installation,
- no additional connector elements are necessary,
- consequently, the butt-joints made with the CONNEX system are almost invisible on the wall surface.

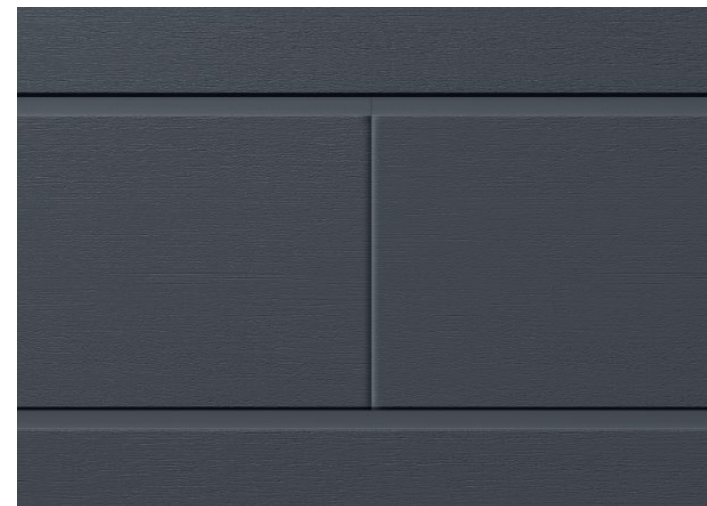


CONNEX SYSTEM

FS-201



FS-301



CONNEX system is available for single boards FS-201, FS-301, double boards FS-202, FS-302 and fourfold boards FS-304.

In case of FS-301 the connection is visible on the wall surface, therefore, to obtain desired visual effect, boards connections need to be planned before installation

KERRAFRONT VS OTHER CLADDINGS



KERRAFRONT FEATURE / ADVANTAGE	KERRAFRONT BENEFIT
Accurate texture of wood, solid colours and Wood Design versions	Faithful, natural wood effect
Matt surface & long (1.5 m) woodgrain pattern	Aesthetics, natural look
Finished product, available in a wide range of colors	Low cost of ownership: does not require regular painting and maintenance
100% water-resistant	Save time and aesthetics, can be washed and cleaned in a quick way
Resistant to rot and insects and the material is not a substrate for the growth of fungi and bacteria	Does not require additional protection – no treatment or regular painting required

TYPE OF CLADDING	TOP ATTRIBUTES	MAINTENANCE	TOOLS
Vinyl	<ul style="list-style-type: none"> — waterproof — lightweight — fast installation — color options — resists fading — texture options 	<ul style="list-style-type: none"> — cleaning 	<ul style="list-style-type: none"> — circular saw — hammer / drill driver — utility knife — tin snips — snap lock punch — unlocking tool — safety glasses
Composite wood	<ul style="list-style-type: none"> — natural look — pre-primed 	<ul style="list-style-type: none"> — cleaning — paint 	<ul style="list-style-type: none"> — circular saw — hammer / pneumatic nailer — paint brush — safety glasses
Fiber cement	<ul style="list-style-type: none"> — strength — fire resistance — pest resistance — texture options — pre-primed — resists fading 	<ul style="list-style-type: none"> — paint — cleaning — caulk 	<ul style="list-style-type: none"> — respirator / dust mask — dust-reducing circular saw or pneumatic or handheld shears — hammer / pneumatic nailer — paint brush — safety glasses
KERRAFRONT	<ul style="list-style-type: none"> — strength — lightweight — waterproof — fast installation — color options — texture options — natural look — durable — insulating — resists fading — resists mold / fungi / pests 	<ul style="list-style-type: none"> — cleaning 	<ul style="list-style-type: none"> — circular saw — hammer / drill driver — safety glasses

KERRAFRONT VS. VINYL SIDING

- at least 3 x better impact resistance
- more solid, rigid, thick, heavy – feel of reliability
- better insulation properties; if used in composite external wall constructions it can significantly improve the U-values obtained
- aesthetics - Wood Design collection, more natural embossing patterns
- not susceptible to fluttering in strong wind

ATTRIBUTE	KERRAFRONT	VS FIBER CEMENT SIDING
DURABILITY	<ul style="list-style-type: none"> — engineered to provide optimum stiffness and reliable stability, while remaining lightweight — does not crack, warp, flake, rot — the impermeable skin made of rigid PV is unaffected by moisture. Cut ends are non absorbent due to the closed cell structure of the material — will not support bacterial or fungal growth. It is resistant to attack by woodworm and termites 	<ul style="list-style-type: none"> — susceptible to unsightly chips and cracks during shipping, delivery and installation — as an absorptive cladding, can hold moisture, creating the potential for penetration leading to rot, mold and/or poor indoor air quality — susceptible for freeze / thaw complications
MAINTENANCE	<ul style="list-style-type: none"> — never requires painting — only requires simple periodic cleaning with mild soap and a garden hose — does not require caulking 	<ul style="list-style-type: none"> — caulking, esp. where panel meets trim, must be maintained to help prevent damage due to moisture
INSTALLATION	<ul style="list-style-type: none"> — starts performing from the moment it is installed without labor intensive priming, painting or caulking — does not use any materials that can cause adverse health effects to installers or others — no special tools required to install for safety assurance — light weight and reliable locking system facilitates handling and installation — material easy-to-work-with, not susceptible to scratches and cracking 	<ul style="list-style-type: none"> — cut edges require touch-up during installation — as a silica-based material, fiber cement requires special tools for cutting and installation, along with a dust mask or respirator, and may potentially cause adverse health effects, eg silicosis (an incurable lung disease) — heavy weight obstructs handling & requires larger crews — lack of built-in locks renders installation difficult and time-consuming — susceptible to chipping and cracking while face-nailed

KERRAFRONT VS WOODFIBRE COMPOSITE

- ready-made product; no need for treatment, painting and re-painting à virtually maintenance-free
- lighter weight - easier handling and installation
- built-in locks and factory made nail slots facilitate and speed up the installation
- Wood Design, Wood Effect and Rustic collection – excellent natural wood imitation
- absolutely moisture resistant – does not absorb water and thus also does not support bacterial or fungal growth and is not susceptible to freeze/thaw complications
- not susceptible to unsightly chips and cracks during shipment and installation

KERRAFRONT VS OTHER CELLULAR CLADDING

- density and uniformity – thanks to its modern co-extrusion technology, which translates into excellent impact resistance & geometrical stability
- colour range including dark colours and Wood Design collection
- woodgrain embossing pattern, of 1.5m (ca 5 ft) repeatability, on a low-gloss surface producing an aesthetic, natural effect
- tight, reliable panel locking