



GEOMETRIC



Houses



Houses Italia



Houses Tuli



Juhu

AVAILABLE TEXTURES:



Flat



9 x 135 cm
3,584 m²
horizontal installation
MOQ – 2 packages

You need 2 cartons
to create the
pattern.



Geometric Light



Geometric Green



Geometric Cafe

AVAILABLE TEXTURES:



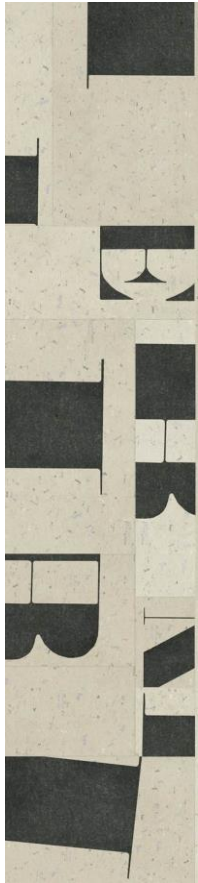
Textile



9 x 135 cm
3,584 m²
horizontal installation
MOQ – 2 packages

You need 2 cartons
to create the
pattern.

GEOMETRIC



Typography

AVAILABLE TEXTURES:



Stone



9 x 135 cm
3,584 m²
horizontal installation
MOQ – 2 packages

You need 2 cartons
to create the
pattern.



Origami Birds

You need 1 carton
to create the
pattern.



Confetti Balloons

You need 2 cartons
to create the
pattern.
MOQ – 2 packages

AVAILABLE TEXTURES:



Flat



9 x 135 cm
3,584 m²
horizontal installation



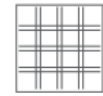
Geometric Mesh

You need 2 cartons
to create the
pattern.
MOQ – 2 packages.



Geometric Linen

AVAILABLE TEXTURES:



Textile



9 x 135 cm
3,584 m²
horizontal installation



JUHU
135 x 29,5



HOUSES TULI
135 x 29,5



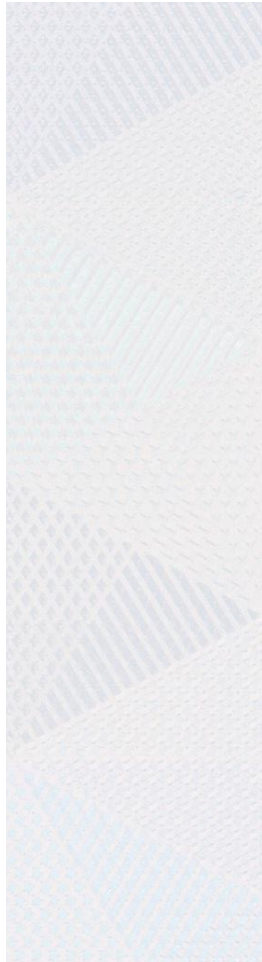
HOUSES
135 x 29,5



HOUSES ITALIA
135 x 29,5

The patterns consist of 18 panels (2 cartons 9 pcs each)
Dimension of the pattern w. 270cm x h. 265,5cm - 7,168 m²





GEOMETRIC LIGHT

135 x 29,5 cm



GEOMETRIC GREEN

135 x 29,5 cm

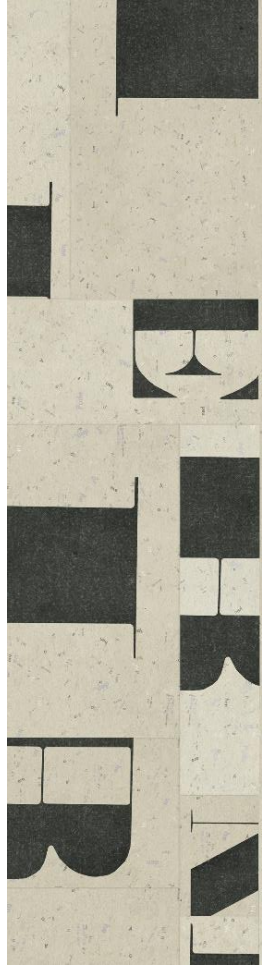


GEOMETRIC CAFE

135 x 29,5 cm

The patterns consist of 18 panels (2 cartons 9 pcs each)
Dimension of the pattern w. 270cm x h. 265,5 cm - 7,168 m²

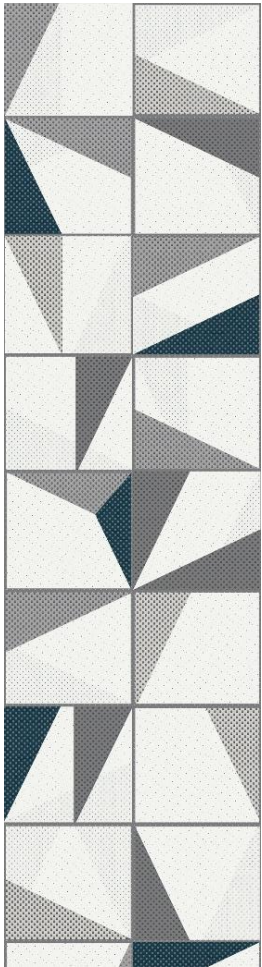




TYPOGRAPHY
135 x 29,5

The pattern consists of 18 panels (2 cartons 9 pcs each)
Dimension of the pattern w. 270cm x h. 265,5cm - 7,168 m²





ORIGAMI BIRDS

135 x 29,5



CONFETTI BALLONS

135 x 29,5

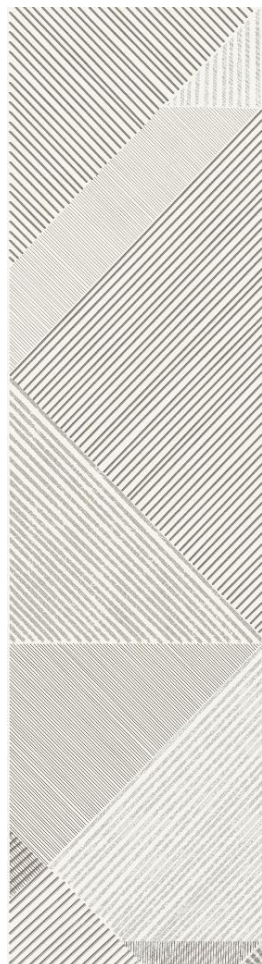
The pattern Confetti Ballons consists of 18 panels (2 cartons 9 pcs each)
Dimension of the pattern w. 270cm x h. 265,5cm - 7,168 m²





GEOMETRIC LINEN

135 x 29,5



GEOMETRIC MESH

135 x 29,5

The pattern consist of 18 panels
(2 cartons 9 pcs each)
Dimension of the pattern
w. 270cm x h. 265,5cm - 7,168 m²



ACCESSORIES

TRIMS

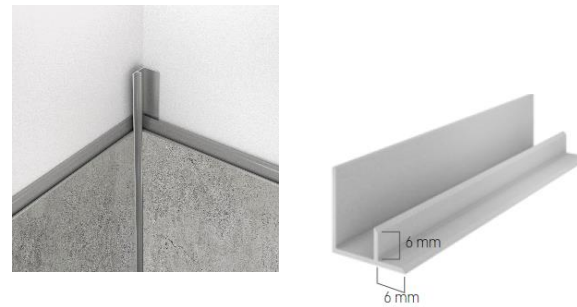
A-01

Starter trim



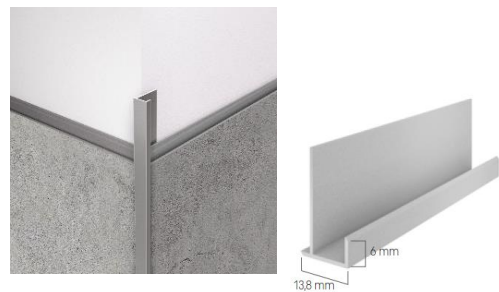
A-02

Internal angle



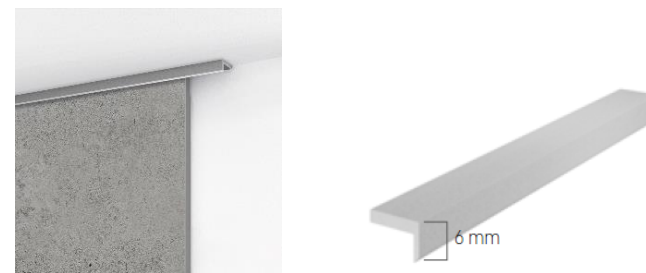
A-03

External angle



A-05

Top edge trim



MOUNTING ADHESIVE



Trims available
in 2 colours:



Silver



Champagne

1 or 5 trims in the cardboard.

ADDITIONAL INFORMATION

TRANSPORT & STORAGE:

- In a horizontal position, on a flat Surface.
- In non-sunlight places.
- Storage or transporting temperature less than 60°C.

PRACTICAL INFORMATION

- Long panels 270 cm i 300 cm available on demand.
Short planks 135 cm on stock.
- Minimum order quantity for Unicolour collection is 50 m² (17 selected colours), lead time - 6 weeks.
- Any other colour according to RAL available at MOQ 150 m² and lead time is 8 weeks

TEMPERATURE RESISTANCE

- Do not use in areas exposed to high temperatures above 60°C.

CLEANING:

- Do not leave liquid dirt to dry.
- Do not clean with sharp and abrasive cloths, sponges and brushes.
- Do not use acetone and acid based fluids and to clean and disinfect.
- Do not leave any cleaning agents on the panels' surface. After cleaning rinse thoroughly. Any cleaning agents' residue on the surface of panels may result in discolouration.