



DIZAINA  
FABRIKA



# KERRADEC DECORATIVE WALLS



# KERRADECO. WALL ANEW

Each interior has different possibilities. Each one can create an individual, inspiring atmosphere.

The modern Kerradeco decorative panels, created by VOX stylists and experts, makes walls cease to be a background and become a space protagonist.

A large palette of designs is a dream arrangement potential and new, realistic textures satisfy the sense of touch.

Kerradeco is not only a great aesthetic solution. It also has excellent technical parameters. It's a moisture and impacts resistant wall, non-flammable and increasing the sound insulation of rooms.



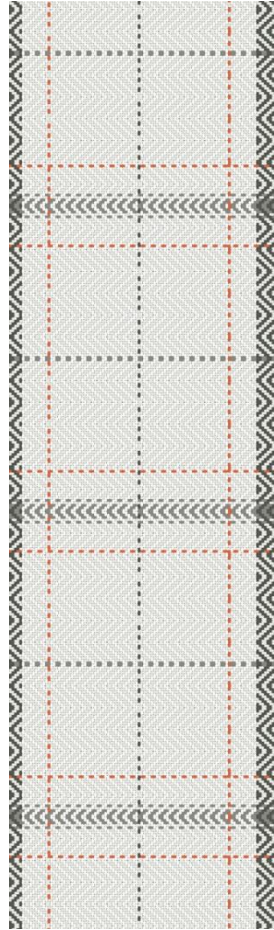
# KERRADECO COLLECTIONS



STONE



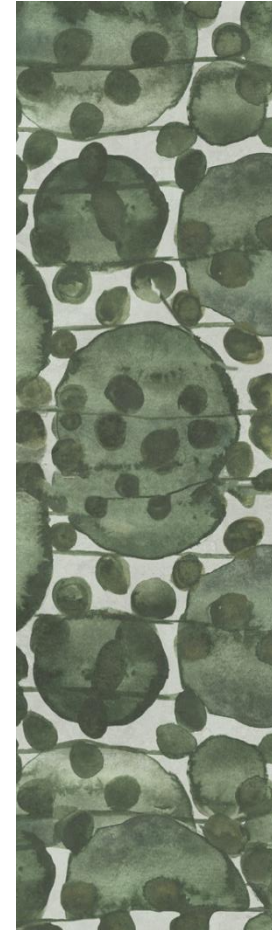
WOOD



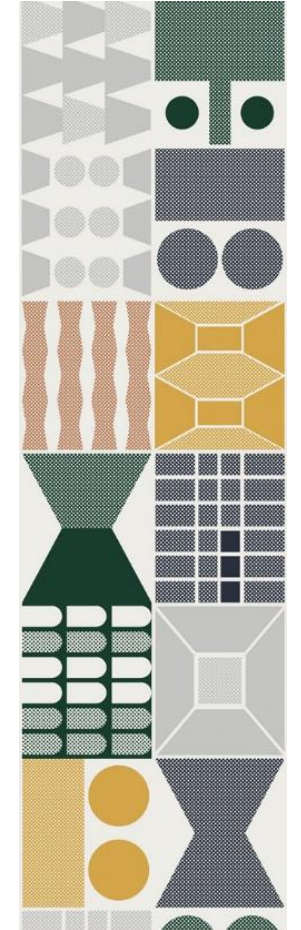
TEXTILE



GEOMETRIC



FLORAL



TILED PATTERNS

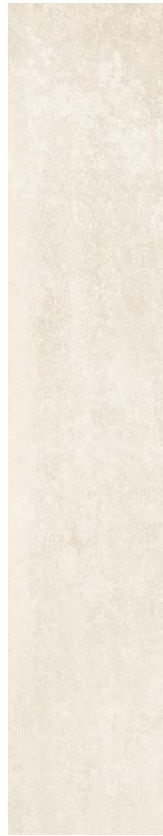
# STONE COLLECTION



Stone Ivory



Stone Misty



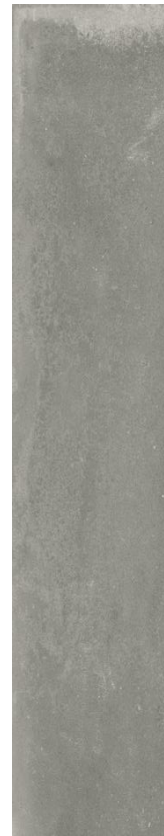
Desert Stone



Stone Moon



Terrazzo



Loft Concrete



Grey stone



Stone Anthracite



Loft Rusty

AVAILABLE TEXTURES:



Stone



8 x 135 cm  
3,186 m<sup>2</sup>  
horizontal installation



4 x 270 cm  
3,186 m<sup>2</sup>  
vertical installation



**STONE IVORY**

135 x 29,5 / 270 x 29,5



**STONE MISTY**

135 x 29,5 / 270 x 29,5



**DESERT STONE**

135 x 29,5





**TERRAZZO**

135 x 29,5





**STONE MOON**  
135 x 29,5



**LOFT CONCRETE**  
135 x 29,5







**GREY STONE**  
135 x 29,5





**LOFT RUSTY**

135 x 29,5



**STONE ANTHRACITE**

135 x 29,5 / 270 x 29,5



# WOOD COLLECTION



Wood Brandy



Ash Wood



Snowy Wood



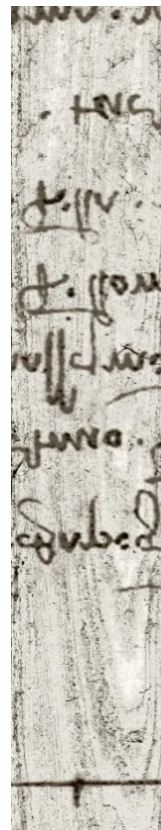
Wood Vintage



Wood Carbon



Concrete



Concrete Art

AVAILABLE TEXTURES:



Wood



8 x 135 cm  
3,186 m<sup>2</sup>  
horizontal installation



4 x 270 cm  
3,186 m<sup>2</sup>  
vertical installation



**ASH WOOD**  
135 x 29,5



**WOOD BRANDY**  
135 x 29,5





**SNOWY WOOD**

135 x 29,5



**WOOD VINTAGE**

135 x 29,5





**WOOD CARBON**

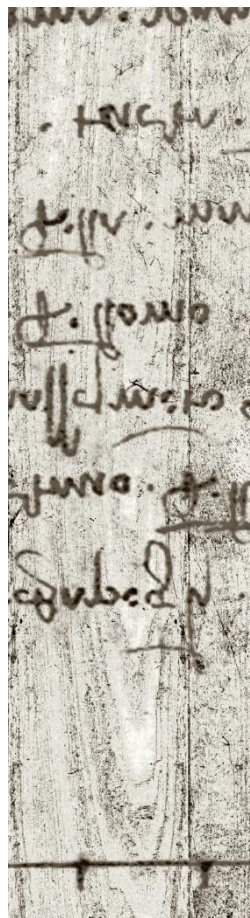
135 x 29,5



**CONCRETE**

135 x 29,5  
270 x 29,5





## CONCRET ART

270 x 29,5

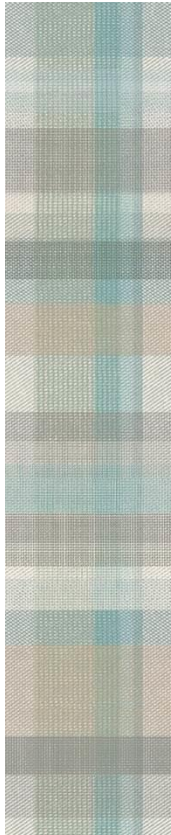
The pattern consists of 8 panels (2 cartons ; 4 pcs each.)  
Dimension of the pattern w 236 cm x h 270 cm – 6,372 m<sup>2</sup>



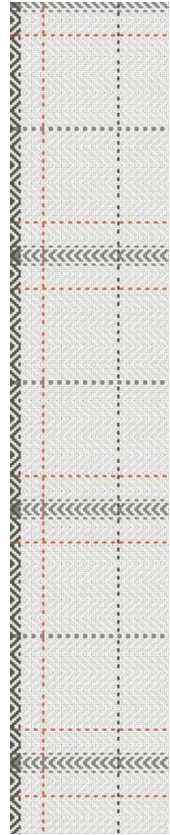
# TEXTILE COLLECTION



Scotch



Blue Tartan



Retro Grey



Tweed

AVAILABLE TEXTURES:



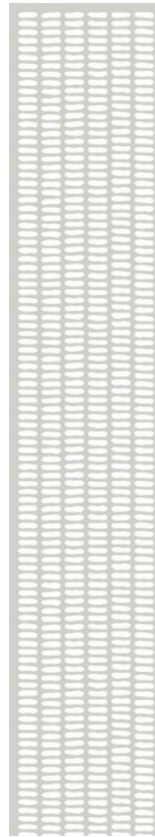
Textile



8 x 135 cm  
3,186 m<sup>2</sup>  
horizontal installation



4 x 270 cm  
3,186 m<sup>2</sup>  
vertical installation



KNITS COOL GREY



KNITS WARM GREY



KNITS BEIGE

AVAILABLE TEXTURES:



Flat



8 x 135 cm  
3,186 m<sup>2</sup>  
horizontal installation





**SCOTCH**

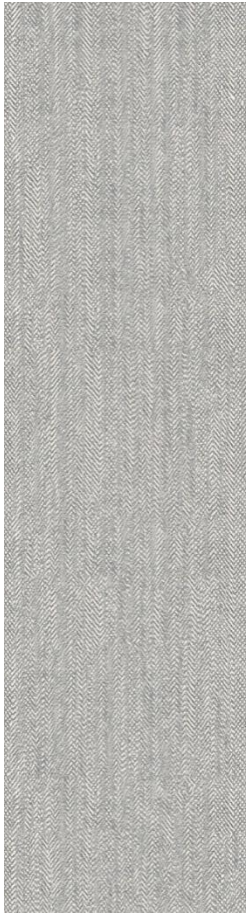
135 x 29,5  
270 x 29,5



**BLUE TARTAN**

135 x 29,5



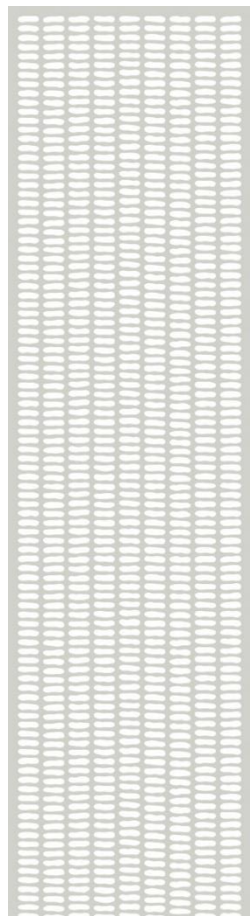


**TWEED**  
135 x 29,5



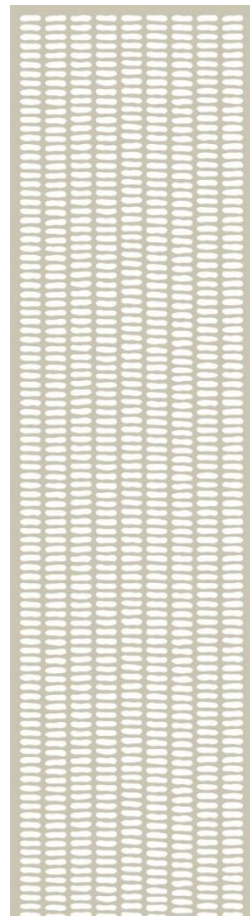
**RETRO GREY**  
135 x 29,5





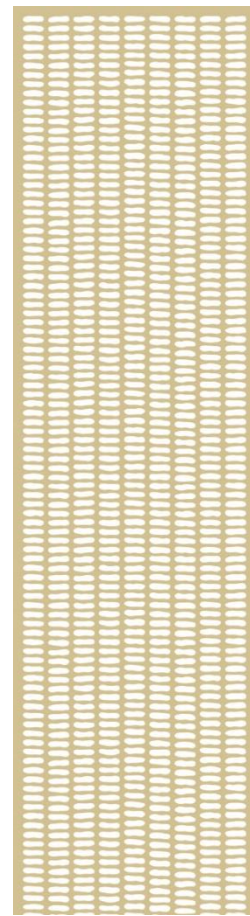
**KNITS COOL GREY**

135 x 29,5



**KNITS WARM GREY**

135 x 29,5



**KNITS BEIGE**

135 x 29,5

The patterns consist of 4 designs.  
The carton contains 8 panels, 2 panels with each pattern.



# GEOMETRIC



Houses



Houses Italia



Houses Tuili



Juhu

AVAILABLE TEXTURES:

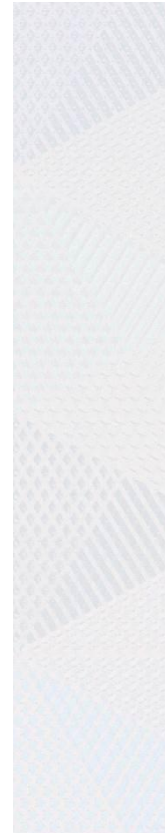


Flat

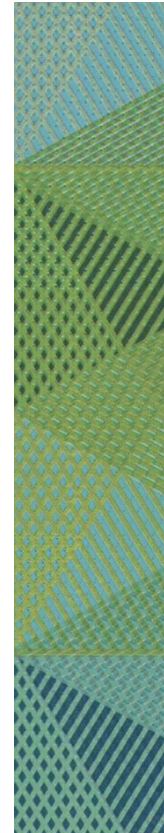


9 x 135 cm  
3,584 m<sup>2</sup>  
horizontal installation  
MOQ - 2 packages

You need 2 cartons  
to create the  
pattern.



Geometric Light



Geometric Green



Geometric Cafe

AVAILABLE TEXTURES:



Textile



9 x 135 cm  
3,584 m<sup>2</sup>  
horizontal installation  
MOQ - 2 packages

You need 2 cartons  
to create the  
pattern.

# GEOMETRIC



Typography

AVAILABLE TEXTURES:



Stone



9 x 135 cm  
3,584 m<sup>2</sup>  
horizontal installation  
MOQ – 2 packages

You need 2 cartons  
to create the  
pattern.



Origami Birds

You need 1 carton  
to create the  
pattern.



Confetti Balloons

You need 2 cartons  
to create the  
pattern.  
MOQ – 2 packages

AVAILABLE TEXTURES:



Flat



9 x 135 cm  
3,584 m<sup>2</sup>  
horizontal installation



Geometric Mesh

You need 2 cartons  
to create the  
pattern.  
MOQ – 2 packages.



Geometric Linen

AVAILABLE TEXTURES:



Textile



9 x 135 cm  
3,584 m<sup>2</sup>  
horizontal installation



**JUHU**  
135 x 29,5



**HOUSES TULI**  
135 x 29,5



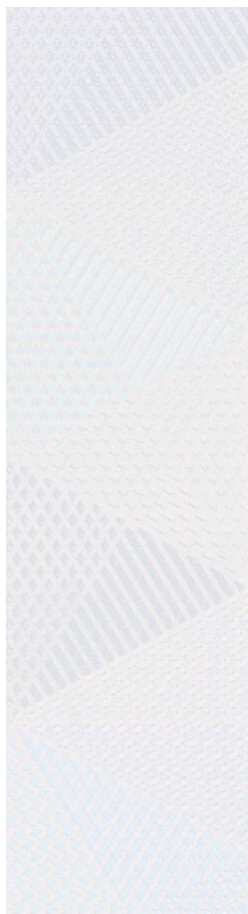
**HOUSES**  
135 x 29,5



**HOUSES ITALIA**  
135 x 29,5

The patterns consist of 18 panels (2 cartons 9 pcs each)  
Dimension of the pattern w. 270cm x h. 265,5cm - 7,168 m<sup>2</sup>





**GEOMETRIC LIGHT**

135 x 29,5 cm



**GEOMETRIC GREEN**

135 x 29,5 cm

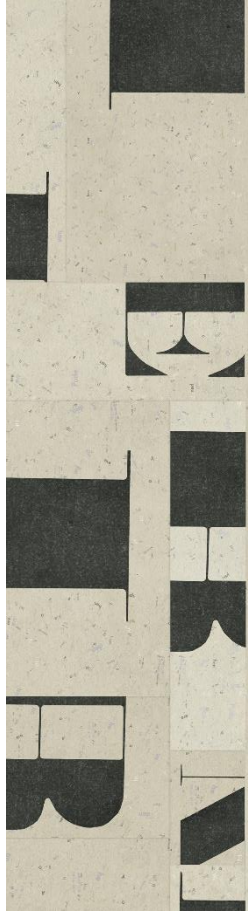


**GEOMETRIC CAFE**

135 x 29,5 cm



The patterns consist of 18 panels (2 cartons 9 pcs each)  
Dimension of the pattern w. 270cm x h. 265,5 cm - 7,168 m<sup>2</sup>



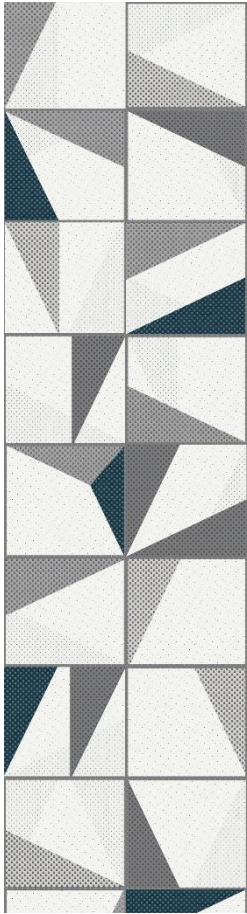
## TYPOGRAPHY

135 x 29,5

The pattern consists of 18 panels (2 cartons 9 pcs each)  
Dimension of the pattern w. 270cm x h. 265,5cm - 7,168 m<sup>2</sup>







### ORIGIAMI BIRDS

135 x 29,5



### CONFETTI BALLONS

135 x 29,5

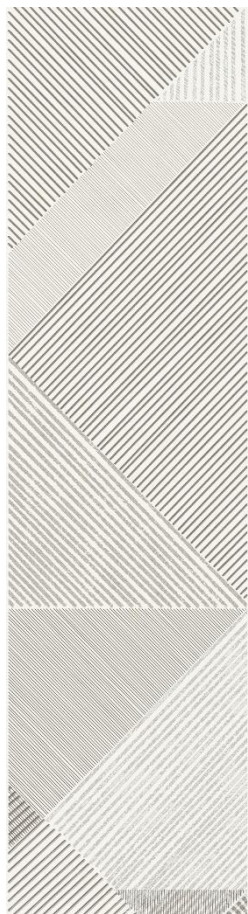
The pattern Confetti Ballons consists of 18 panels (2 cartons 9 pcs each)  
Dimension of the pattern w. 270cm x h. 265,5cm - 7,168 m<sup>2</sup>





### GEOMETRIC LINEN

135 x 29,5



### GEOMETRIC MESH

135 x 29,5

The pattern consist of 18 panels  
(2 cartons 9 pcs each)  
Dimension of the pattern  
w. 270cm x h. 265,5cm - 7,168 m<sup>2</sup>



# FLORAL COLLECTION



Jungle Leaves



Night Forest



Grey Forest

AVAILABLE TEXTURES:



Textile



9 x 135 cm  
3,584 m<sup>2</sup>  
horizontal installation



Hanging Plants

AVAILABLE TEXTURES:



Stone



9 x 135 cm  
3,584 m<sup>2</sup>  
horizontal installation



**NIGHT FOREST**  
135 x 29,5



**GREY FOREST**  
135 x 29,5



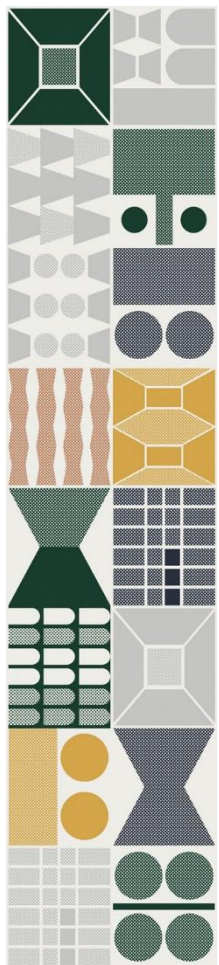
**HANGING PLANTS**  
135 x 29,5



**JUNGLE LEAVES**  
135 x 29,5



# TILED PATTERNS COLLECTION



Multiform

AVAILABLE TEXTURES:

Textile

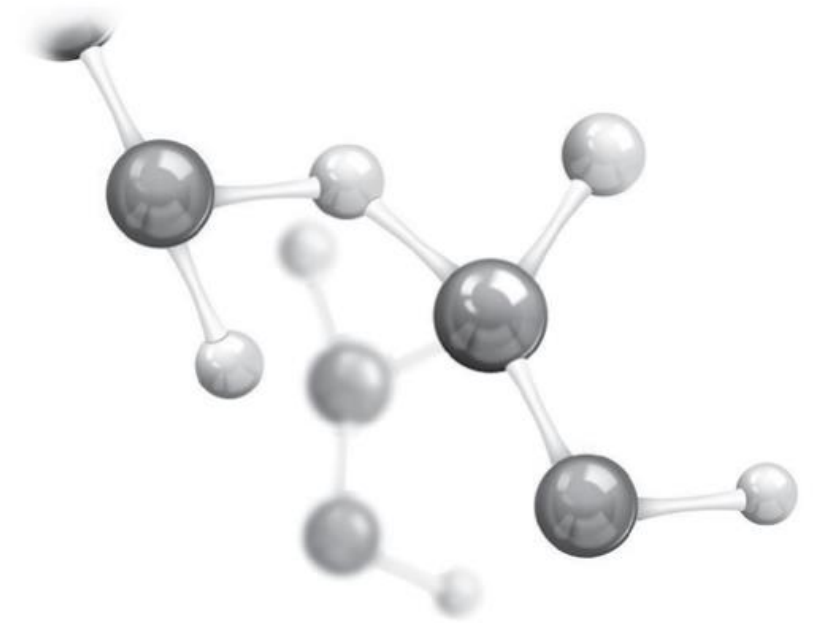


9 x 135 cm  
3,584 m<sup>2</sup>



# KERRADECO BIO FOR SPECIAL TASKS

- For places requiring the use of materials with increased technical and functional parameters, we have developed the Kerradeco Bio series represented by the Bio White.
- It is a series that, in addition to the standard advantages of Kerradeco, is characterized by bacteriostatic properties. Therefore, it can be successfully used in hospitals and doctor's offices, beauty salons or food processing.
- The highest level of hygiene thanks to silver ions. This unique element has the ability to bind bacterial enzymes, which limits their multiplication, leading to their total extinction. In addition, the coating enriched with nanoparticles does not undergo leach out and abrasion - its antiseptic effect remains unchanged despite the daily operation of the coated surface.





**BIO WHITE**

270 x 29,5 cm



# MULTIPLE USE

- Kerradeco is also a great solution for public and commercial spaces. The variety of patterns and textures is a real showcase for architects and interior designers.
- Excellent choice in new construction and renovation.
- Universal application, due to it's properties it may replace:
  - ceramic tiles – do not crack under impact, do not require jointing, reduced time of installation, clean installation,
  - MDF boards - resistant to mechanical damage, resistant to moisture and water,
  - drywall (also to build partition walls) - three operations (mounting of plasterboard, filling, painting) are replaced with one – Kerradeco panels installation.





# EXAMPLES OF PROJECTS



**KRYNICA APARTMENTS**

**BY THE SEA**

**Wood Vintage**



# RESTAURANT IN POZNAN Scotch



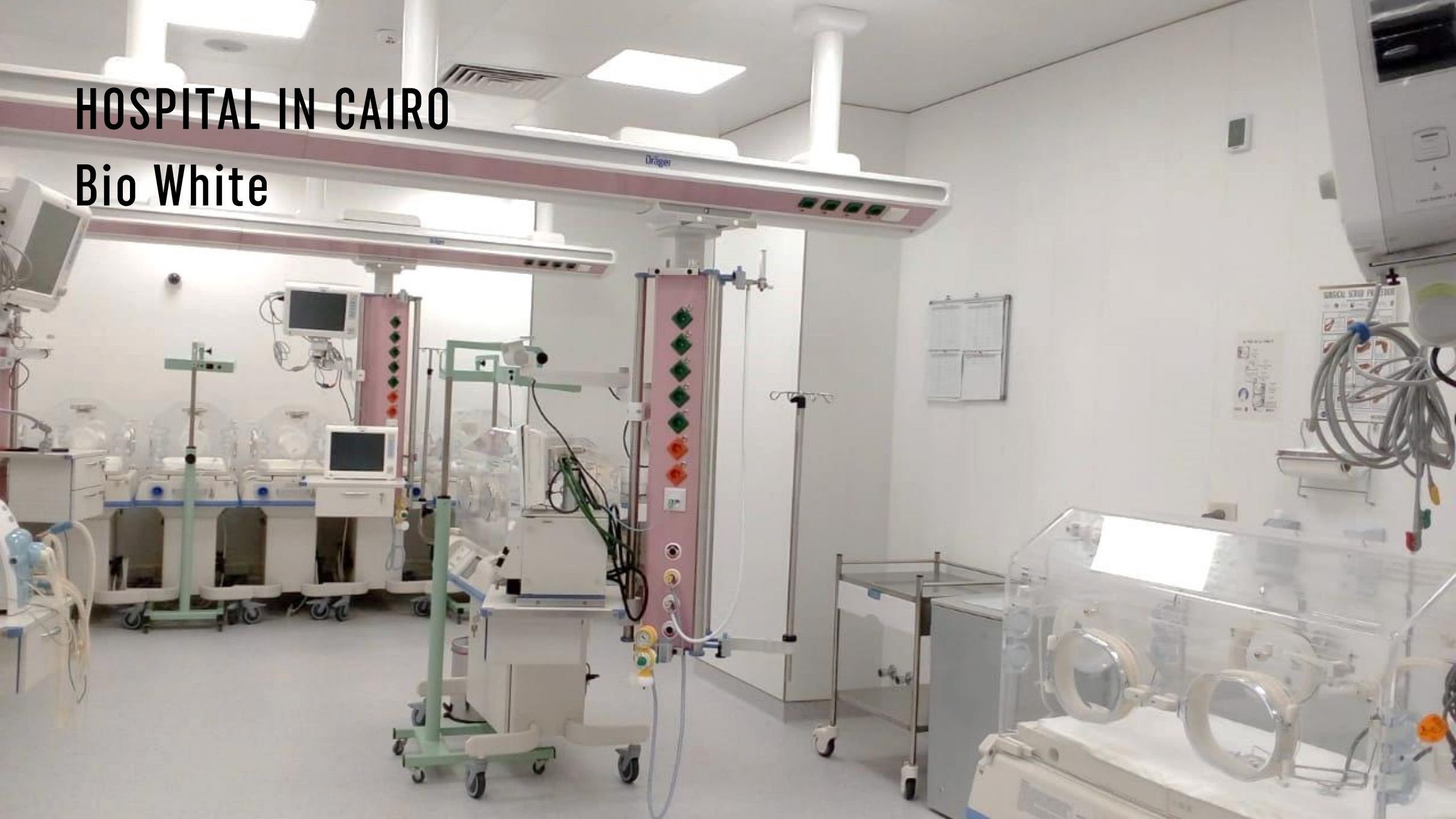
1 WRAP IS A  
TREAT  
4 WRAPS ARE A  
TREATMENT  
12 WRAPS ARE A  
PROCEDURE

THE BEST CHALLENGE EVER!

DELUXE  
LAUNDRY  
SERVICE  
WASH - DRY - FOLD  
12 HOURS SERVICE  
7-DAY SERVICE

**HOSPITAL IN CAIRO**

**Bio White**



# MOBILE HOUSE

## Stone Anthracite



# DISTINCTIVE FEATURE

- Innovative Kerracore technology
- Technical and functional parameters which doesn't feature competitive products:
  - 10 years warranty
  - fire class B (EU standard) / Class 1 (UK standard)
  - safe in contact with food
  - increases sound insulation of the room ( $R_w = 60 \text{ dB}^*$ )
  - durable and waterproof.
- Fast and intuitive installation.

\* tested wall was made of silicate blocks, covered with mineral wool and Kerradeco. The test was made to answer the question of how much Kerradeco will improve sound insulation of a typical hotel wall of  $RA1 = 55 \text{ dB}$ , compared with the commonly used drywall. Studies have shown that the effectiveness of Kerradeco is comparable to 12.5 mm drywall with mineral wool filling.



# TECHNOLOGY

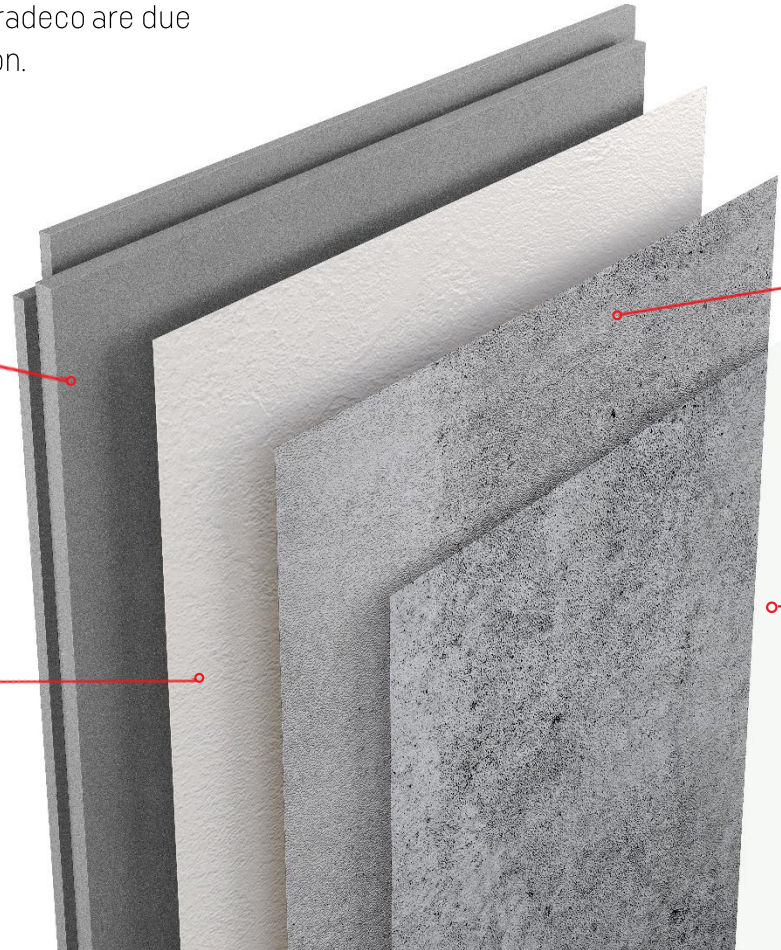
- Exceptional aesthetic and functional values of Kerradeco are due to the Kerracore technology used during production.

## BOTTOM LAYER (FOAMED POLYMER)

The composite is made of a specially selected mix of minerals and polymers. It is characterized by high density and homogeneity, which affects the high strength of the product and its resistance to mechanical damage.

## TOP LAYER (HARD POLYMER)

Made of polymers hardened, impact and scratch resistant with a thermally imprinted structure that gives a realistic and natural look.



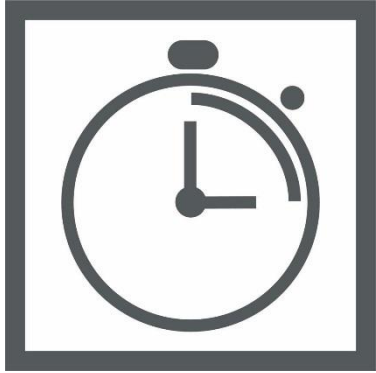
## OVERPRINT

High-quality overprint made with innovative digital printing technology perfectly reproduces natural materials such as stone, wood or textiles.

## PROTECTIVE VARNISH

The panel is covered matt varnish, which protects the surface against mechanical damage, UV radiation and allows to easily remove any dirt from the surface.

# KERRADECO MAIN FEATURE



FAST INSTALLATION



RESISTANT TO  
MECHANICAL  
DAMAGE



WATERPROOF



CLEANLINESS



10 YEARS  
WARRANTY



# SAFETY & FUNCTIONALITY



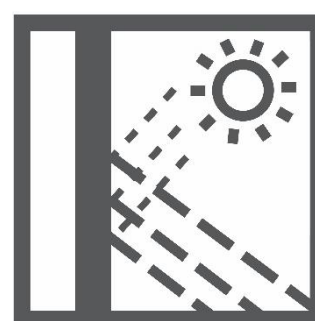
100 % RECYCLABLE



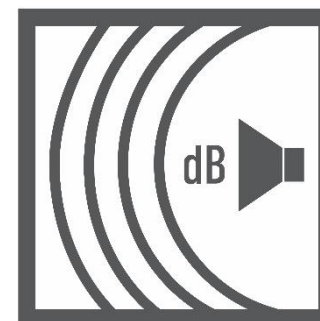
SAFE IN CONTACT  
WITH FOOD



FIRE CLASS  
B-s3, d0



UV RESISTANT



INCREASES SOUND  
INSULATION OF  
THE ROOM  
(Rw=60 dB)



DOES NOT EMIT  
TOXIC FUMES INTO  
THE ATMOSPHERE



Sn and Pb Free

# ACCESSORIES

## TRIMS

A-01

Starter trim



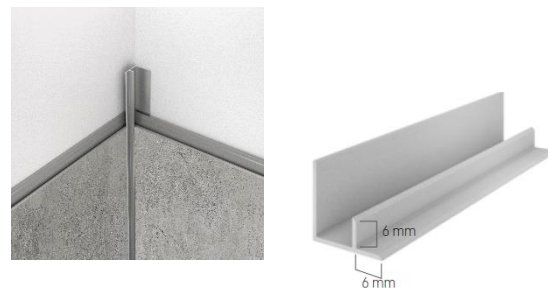
A-03

External angle



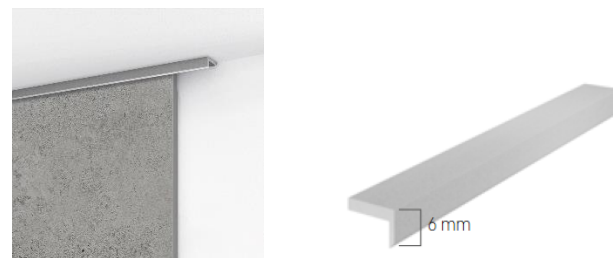
A-02

Internal angle



A-05

Top edge trim



## MOUNTING ADHESIVE

Transparent



Trims available  
in 2 colours:



Silver

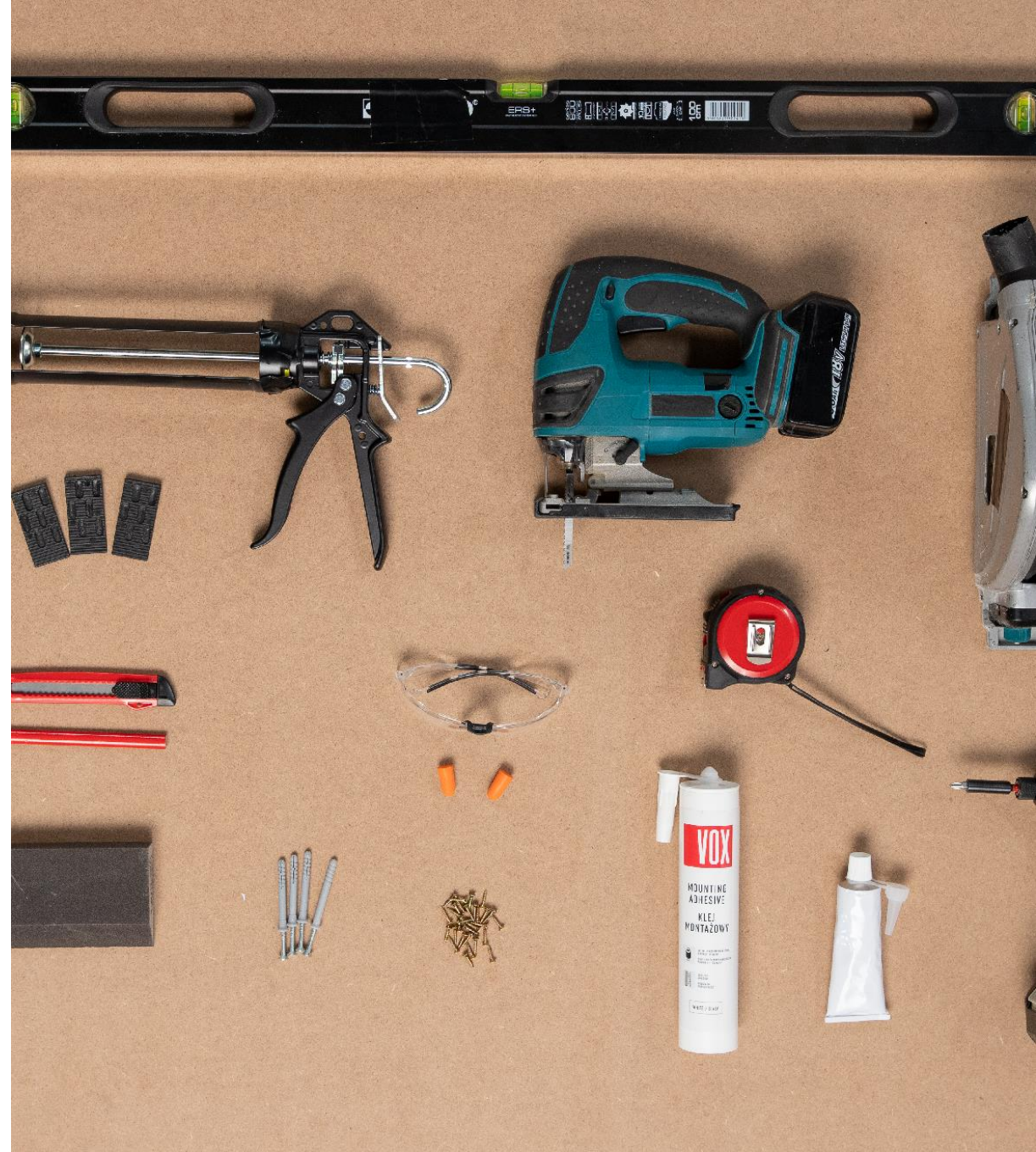


Champagne

1 or 5 trims in the cardboard.

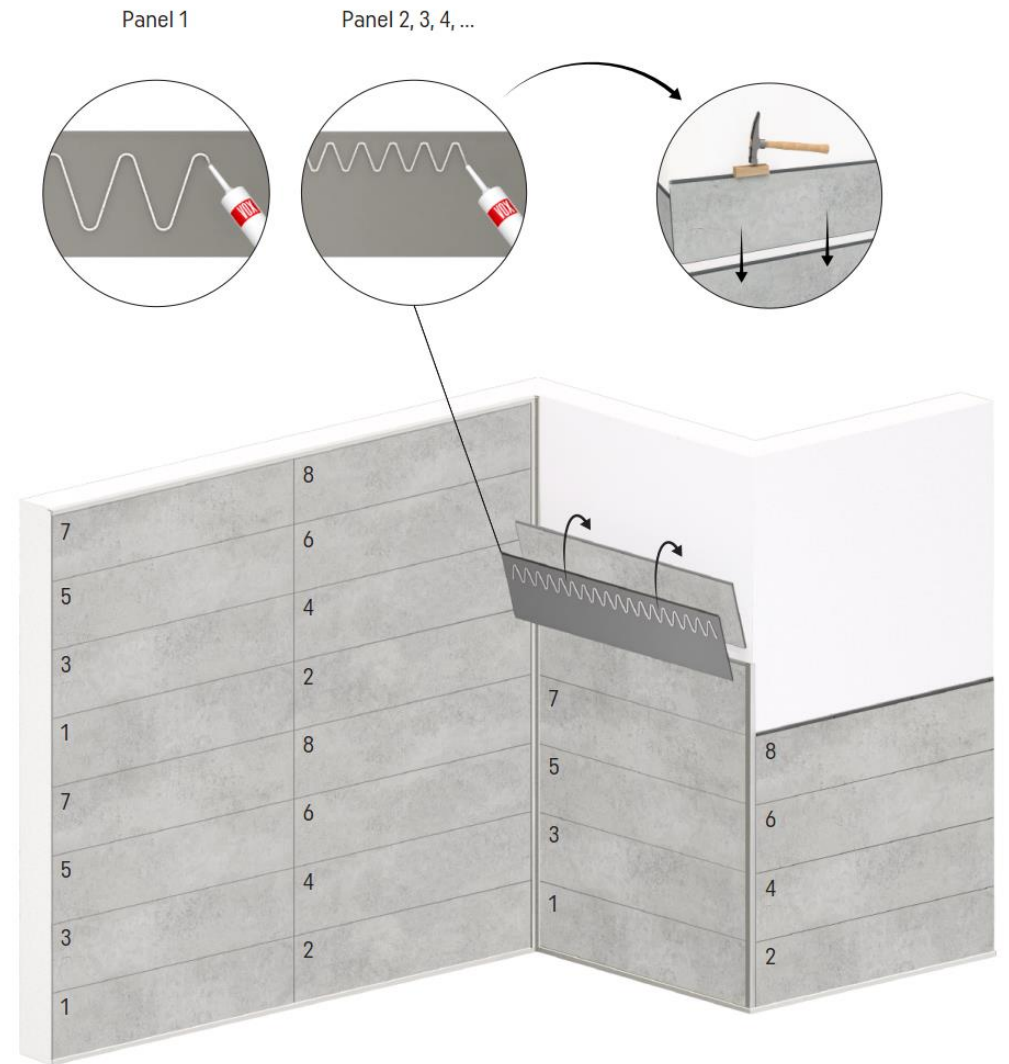
# TIME SAVING

- Quick installation– easy cutting, tongue and groove joint system.
- No need for additional surface-preparation works.
- Clean installation using commonly available assembly tools.
- System of well-matched finishing trims.
- An option for quick construction of partition walls.
- Rooms finished with Kerradeco may be immediately used (e.g. no need for painting).



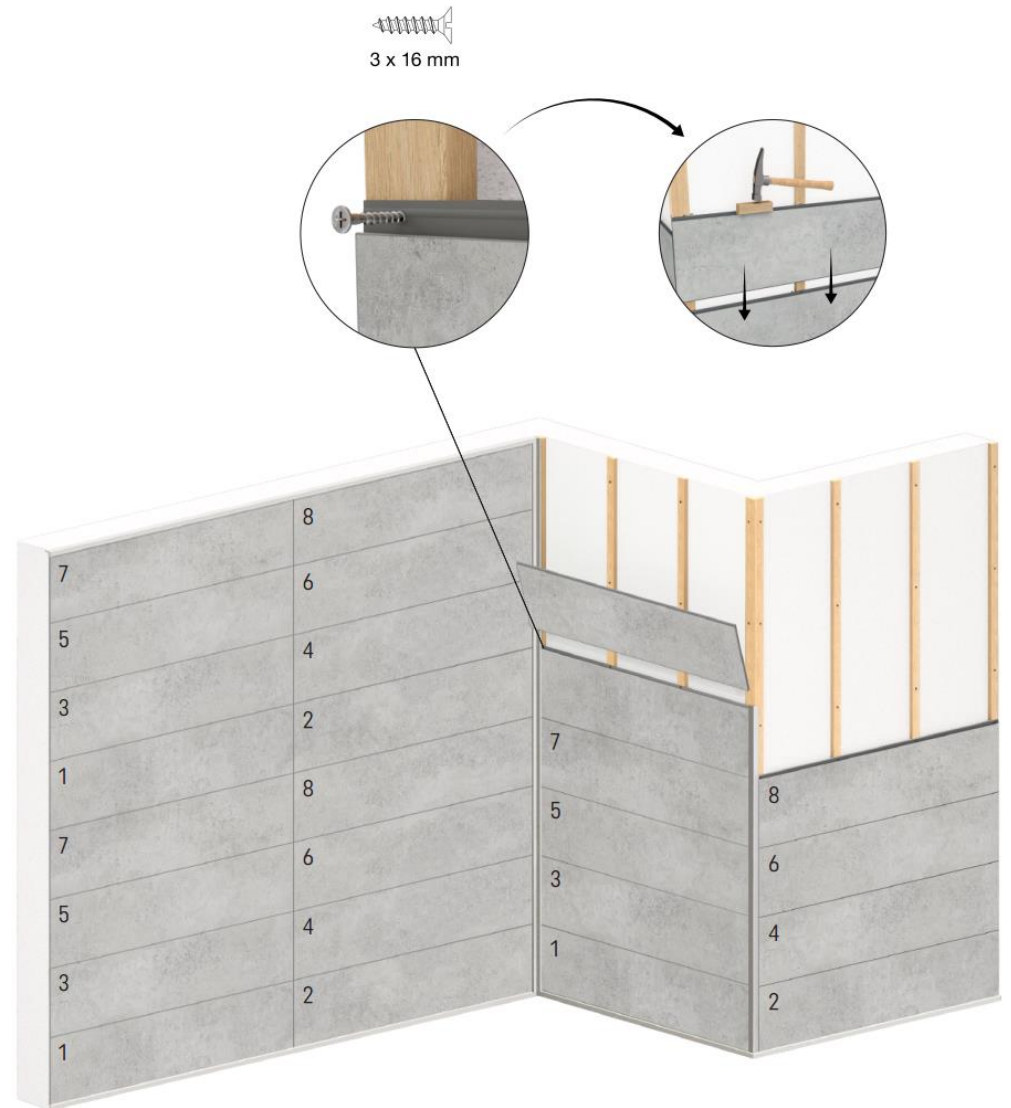
# INSTALLATION USING ADHESIVE

- Only on stable smooth base (eg. concrete, tiles, drywall).
- It is recommended to use VOX mounting adhesive (index 6004018) or any other universal adhesive based on hybrid polymer characterized by high initial bonding strength.
- Panels should be installed in the order specified by numbers on the back of the panel.
- Detailed instruction: [INSTALLATION INSTRUCTION](#)
- [INSTALLATION MOVIE](#)



# INSTALLATION ON WOODEN BATTENS

- Reduces unevenness of wall.
- Detailed instruction: [INSTALLATION INSTRUCTION](#)
- [INSTALLATION MOVIE](#)



# ADDITIONAL INFORMATION

## TRANSPORT & STORAGE:

- In a horizontal position, on a flat Surface.
- In non-sunlight places.
- Storage or transporting temperature less than 60°C.

## PRACTICAL INFORMATION

- All indexes have 1 package as MOQ (unless 2 packages are required by particular decor).
- Index A - products available on stock - 72h.
- Index B - products that are made to order - lead time of maximum 3 weeks.

## TEMPERATURE RESISTANCE

- Do not use in areas exposed to high temperatures above 60°C.

## CLEANING:

- Do not leave liquid dirt to dry.
- Do not clean with sharp and abrasive cloths, sponges and brushes.
- Do not use acetone and acid based fluids and to clean and disinfect.
- Do not leave any cleaning agents on the panels' surface. After cleaning rinse thoroughly. Any cleaning agents' residue on the surface of panels may result in discolouration.